



The IZ600 ALPR - Automatic License Plate Recognition - Camera System was designed specifically for the access control and security markets.

An IZ600 ultra-low light smart camera combined with the IZCentral management system and ALPR software, delivers crystal clear images, automatically recognized license plate data and streaming video.

The IZ600 ultra-low light smart camera combined with the IZCentral management system provides the most accurate license plate reading system on the market. It features virtually non-existent data processing time, and maintains high accuracy in a dim light environment and poor weather conditions - at vehicle speeds of up to 50 miles per hour.

The IZ600 combined with the IZCentral management system offers the most effective vehicle identification and access control solution. The system enables storage of license plates for investigative use and data analysis. License Plates can also be used as prime or dual credentials for entry/exit and to open gates.

Using the license plate as a credential requires no interaction from the driver, eliminating wait times and bottlenecks. Moreover, personnel can be notified about specific LP events with audio/text/email alarms or alerts within a VMS or access control system interface.

The IZ600 ALPR solution creates an efficient, accurate and reliable platform, enabling management to recognize and evaluate suspicious vehicles and run faster forensics.

ULTRA-LOW LIGHT SMART ALPR CAMERA SYSTEM



Streaming Live Video: Delivers overview video and images of the vehicle and the license plate.



Real-Time ALPR Engine: Less than 1/2 of a second plate processing time.



IZCentral Software Management System: Provides robust, long-term data storage for ALPR data and plate images.

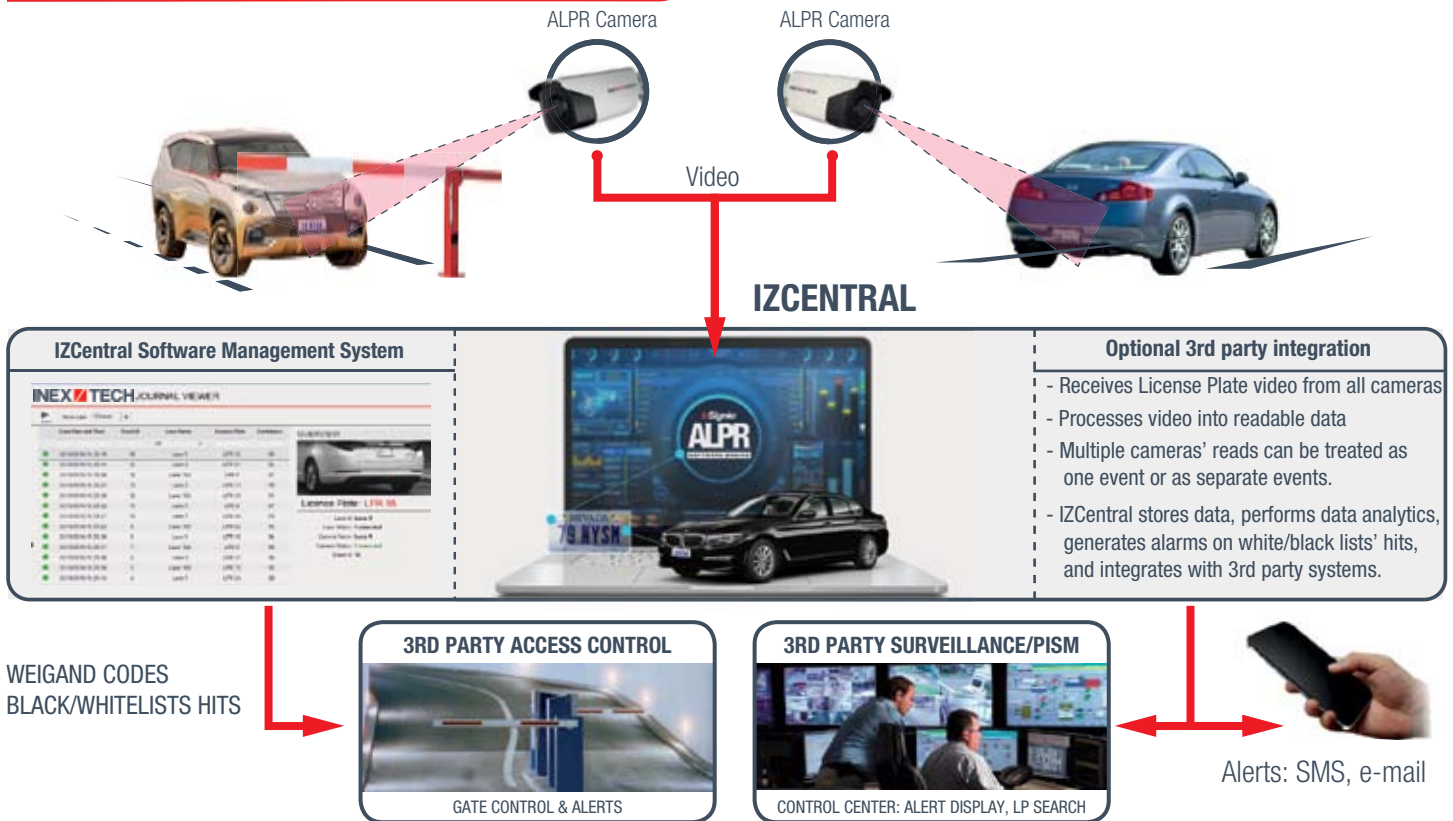


Ultra-Low Light: Provides legible plate images at dim lighting conditions



Integrated with: SKIDATA, AMAG, LENEL, ParkAssist, Amano McGann, Milestone, and many more - please call for additional information.





Improve Quality of License/Number Plates Reads with IZ600 ALPR/ANPR Series Camera System

Camera General

Models	IZ600 Series
Operating Distance	8 – 49 Ft (US Plates); 2.5 – 15 m (Europe)
Vehicle Speed Range	0 – 50 mph (0 – 80 km/h)
Field-of-View	Up to 12 Ft (3.7 m)

Internals

Sensor	1/1.8" (7.18 x 5.32 mm) progressive scan CMOS
Lens	8 mm to 32 mm, f/1.6; 0 Lux with IR. MVF-Motorized Varifocal Zoom
Shutter	1 s to 1/100,000 s, supports slow shutter
Day/Night	850: IR cut filter with auto switch; WH: N/A
Digital Noise Reduction	3D DNR

Environmental

Operating Temperature	-22°F to 140°F (-30°C to 60°C)
Humidity	0% to 95% Non-condensing
Rating	IP67

Electrical

DC Voltage	12 VDC or PoE (802.3at, class 4)
Power Consumption	13.3 Watts, 1.2A; PoE max 17.6 W, 0.3-0.5 A

Operation

IR	850 nm IR wavelength
Recognition Software	InSignia™ ALPR Engine
General Function	One key reset, anti-flicker, password

Mechanical

Dimensions (W x H x D)	4.4" x 4.5" x 13.72" (117 mm x 114.2 mm x 348.3 mm)
Weight	4.57 lbs (2.075 Kg)
Connections (Terminal Blocks)	1 x Ethernet (RJ-45 Female) 1 x Power (DC+, DC-, Ground) 1 x Alarm (IN, Ground)

Optional Server

Supports IZ600 Cameras	Up to 100 ALPR System Connections
Mount	19" Rack Ear or Panel Brackets
Housing Construction	Aluminum Industrial Chassis
Operating System	Windows 10 IoT Enterprise (64 bit)
Processing	8-Core Intel® Atom™
Memory/Storage	4GB DDR RAM, ≥320 GB HDD
Communications	10/100/1000 Gigabit Ethernet
Dimensions	17.2" x 1.7" x 9.8" (437 x 43 x 249 mm)
Weight	10 lbs (4.5 Kg)
Operating Temperature	50°F to 95°F (10°C to 35°C)

Specifications subject to change without notice