



**The IZ600FJ ALPR - Automatic License Plate Recognition - System was designed specifically for the access control and security markets.**

An IZ600FJ System consists of an ultra-low light smart ALPR camera, the IZODPU-G small, POE powered, outdoor processor and ROADVIEW ALPR software engine. The IZ600FJ ALPR System delivers crystal clear images and automatically recognized license plate data.

The IZ600FJ ALPR System provides the most accurate license plate reading solution on the market. It features virtually non-existent data processing time, and maintains high accuracy in a dim lighting environment and poor weather conditions - at vehicle speeds of up to 50 mph.

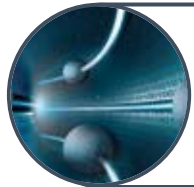
The ALPR Camera combined with the small processing unit and ROADVIEW ALPR engine offers the most effective vehicle identification and access control solution. The IZ600FJ ALPR Solution, paired with IZCentral System Management Software, enables storage of license plates for investigative use and automatic matching of the data to the vehicle's lists/databases. License plates can also be used as prime or dual credentials for entry/exit, to open gates, & to make an on-line reservations.

Using the license plate as an identification requires no personnel interaction, eliminating wait times and bottlenecks. Moreover, management can be notified about specific LP events with audio/text/email alerts or within a VMS or AC system interface.

The IZ600FJ with IZCentral creates an efficient, accurate and reliable platform, enabling administrators to recognize and evaluate vehicles, manage facility access, and run faster forensics.



**Streaming Live Video:** Delivers overview video and images of the vehicle and the license plate.



**Small outdoor DPU with ALPR Engine:** Less than 1/2 of a second plate processing time.



**IZCentral Software Management System:** Provides robust, long-term data storage for ALPR data and plate images.

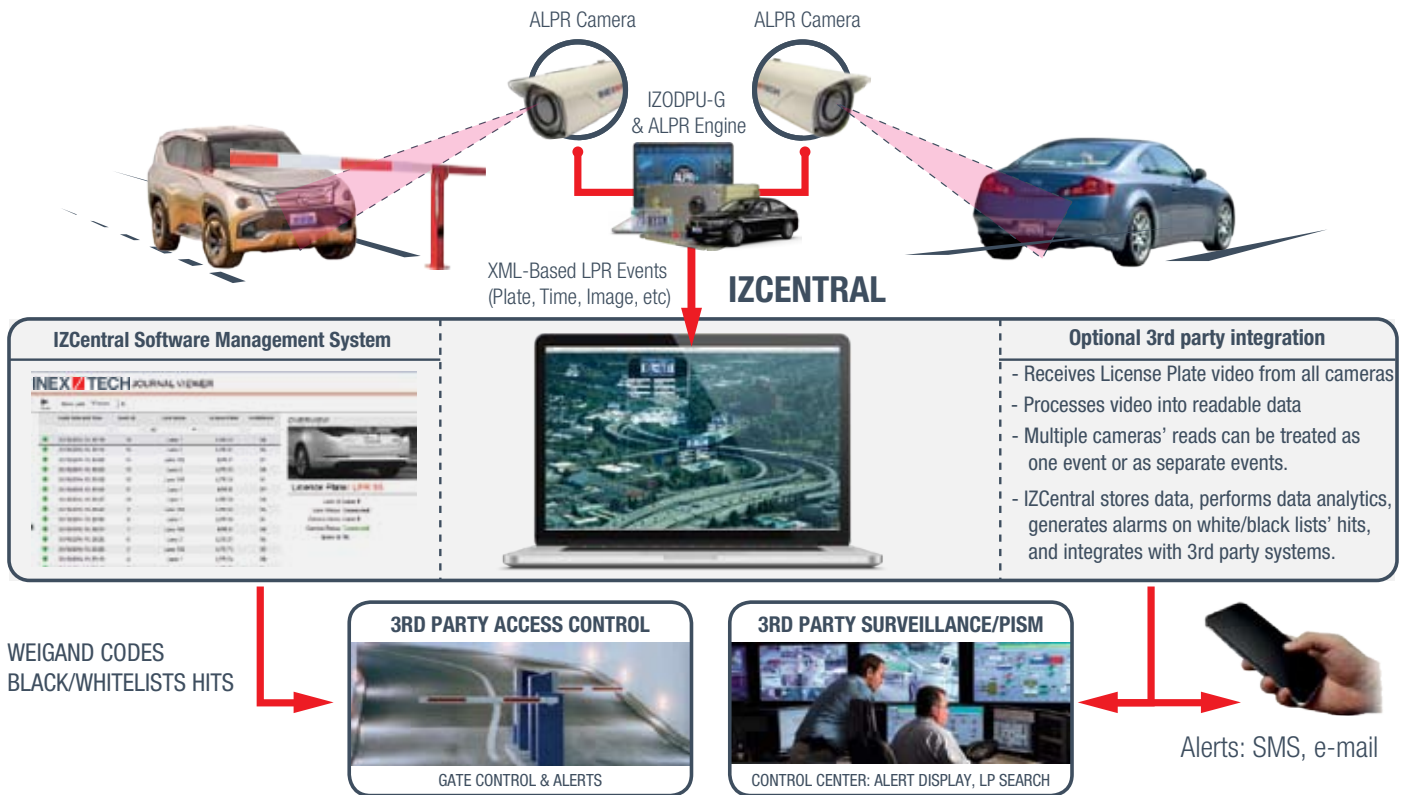


**Ultra-Low Light:** Provides legible plate images in dim lighting conditions



**Integrated with:** PCSC, AMAG, LENEL, S2Sys, Amano McGann, Milestone, and many more - please call for additional information.





### Improve Quality of License/Number Plate Reads with IZ600FJ ALPR/ANPR System

#### Camera General

Models	<b>IZ600FJ Series</b>
Operating Distance	8 – 82 ft; 2.5 – 25 m
Vehicle Speed Range	0 – 50 mph (0 – 80 km/h)
Field-of-View	Up to 12 ft (3.7 m)

#### Internals

Sensor	1/2.8", 2M, Progressive Scan CMOS
Lens	6.0 - 50mm Motorized Auto Focus
Day/Night Switch	IR Cut Filter with auto switch

#### Min. Illumination

Color	0.05 Lux
IR	0 Lux (IR LED on)

#### Environmental

Operating Temperature	-4°F to +140°F (-20°C to +60°C)
Storage Temperature	-22°F to +140°F (-30°C to +60°C)
Humidity	10% – 90% RH
Rating	IP66

#### Electrical

DC Voltage	12 V DC or PoE (802.3at)
Power Consumption	13.8 Watts

#### Operation

IR	850 nm IR wavelength
Recognition Software	InSignia™ ALPR Engine

#### Mechanical

Dimensions (W x H x D)	3.34" x 3.14" x 11.02" (85 x 80 x 280 mm)
Weight	2.8 lbs (1.25 Kg)
Connections	1 x Ethernet (RJ-45 Female) 1 x Power (DC+, DC-, Ground)

#### IZODPU-G Server

Supports IZ600FJ Cameras
Streaming Protocol
Video Compression
RAM
CPU
Storage
Power Supply
Power Consumption
Dimensions
Ingress Protection
Operating Temperature

#### WITH ROADVIEW ALPR ENGINE

Up to 2 ALPR System Connections
RTSP
H.264
4 GB 64-bit LPDDR4, 1600MHz 25.6 GB/s
Quad-core ARM Cortex-A57 MPCore
MicroSD, 64 Gb
PoE 802.3af/at
12 Watts
6.18 x 3.43 x 8.03" (157 x 87 x 204 mm)
IP67
- 4°F - 140°F (-20°C – 60 °C)

Specifications subject to change without notice